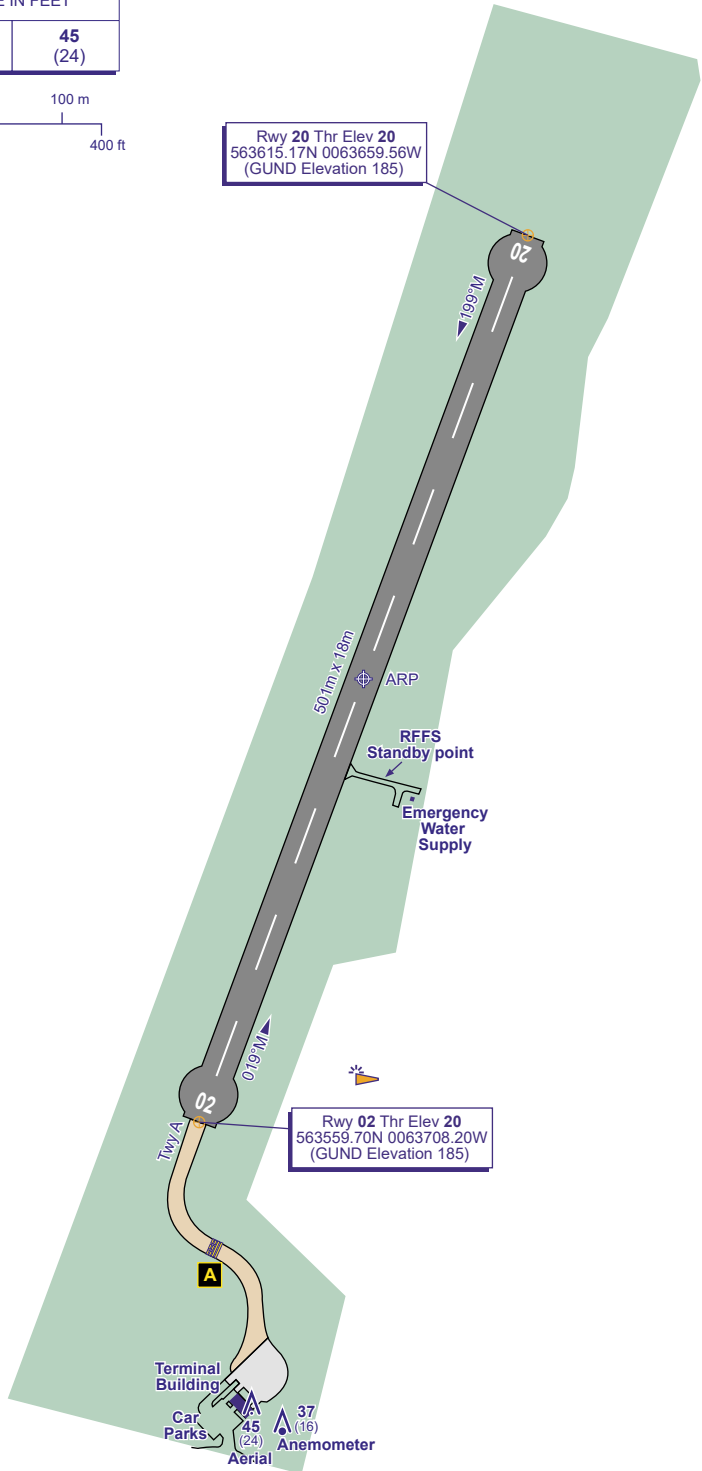


GUND (Geoid Undulation) =
The height of the Geoid (MSL) above the
Reference Ellipsoid (WGS 84) at the stated position.

BEARINGS ARE MAGNETIC
ELEVATIONS AND HEIGHTS ARE IN FEET

ELEVATIONS IN FEET AMSL	45
HEIGHTS IN FEET ABOVE AD	(24)



COM		
A/G	125.005	COLL RADIO

RUNWAY/TAXIWAY/APRON PHYSICAL CHARACTERISTICS		
APRON / RWY / TWY	SURFACE	BEARING STRENGTH
RWY 02/20	Asphalt	-
Apron	Asphalt	ESWL 1,500kg
TWY A	Asphalt	ESWL 1,500kg